

# CYPRESS SYSTEMS

Over 700 veneer moisture detectors installed world-wide!

Introducing the...

## Evolution Series

*Most Advanced features, greater control & highest return on your investment.*



Advanced moisture level settings include parameters for perimeter moisture masking on the veneer edges, moisture pocket size, & average moisture levels

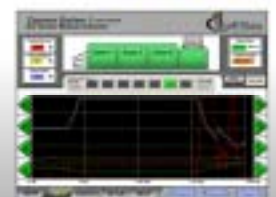
Real-Time data on the main screen shows the veneer moisture profile, sensor readings, & the main production stats.

Intuitive setup screens & the use of a large 15" touch-screen allow the user to navigate the menus with ease and make changes in real-time.

New Advanced Automatic Dryer Controls (ADC) provide more precise adjustments & more built in logic for optimum moisture distribution.

Part of the New ADC is the integration of Elliott Bay's Dryer Profiler Software, which allows the operator to analyze system performance and easily make adjustments based on real-time information.

- Increase Avg. MC%
- Reduce Redry Costs
- Improve Veneer Quality
- Reduce Glue Consumption
- Improve Drying Efficiency



To find out more, visit our website at [www.ellbay.com](http://www.ellbay.com) or call us at 1-206-762-6560



# CYPRESS SYSTEMS

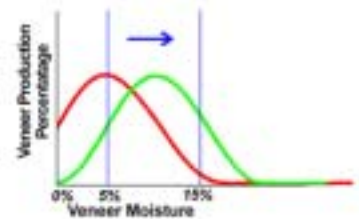
Over 700 veneer moisture detectors installed world-wide!

## THE CYPRESS ADVANTAGE

- Proven brush electrode system, implemented by Elliott Bay in 1985 - Our experience is unmatched.
- Continued Research and Development ensures we offer the best systems and service available today.
- The Cypress Evolution has the most features in the industry, allowing for complete moisture control and operator flexibility.
- Our low maintenance design = low costs of ownership.
- The robust construction ensures all the components will survive harsh environments, high temperatures, vibration, and a trouble free 24/7 service that Elliott Bay has built its name on.
- With a long and proven track record, we have solutions for nearly any application, including:  
Dry End, Green End, LVL, Sliced Veneer, Dimensional Lumber and Custom Applications.

## THE BOTTOM LINE

- Increase your profits by up to 20% with proper veneer moisture detection and control
  - Customers consistently report production increases from 5-20% immediately following the installation of a Cypress System from Elliott Bay.
- True, fast ROI that you can see.
  - The Cypress System will pay for itself in the early months of operation, not years, and real benefits can be seen within the first week!
- Increase capacity while using the same wood, and the same dryer.
  - Minimize your investment and Maximize your returns with the addition of a Cypress System moisture detector.



## TECHNICAL

### A. Mechanical

1. Frame: Welded structural steel with corrosion resistant fasteners.
2. Transport:  
Dry Chain – 19” High Friction Urethane on cast steel sheaves.  
Cross Tipple – (3) 6” powered transport rollers.
3. Drive:  
Dry Chain – Sprocket: 60 tooth RC-50. Optional sizes provided upon request. Optional .3hp motor & drive.  
Cross Tipple – 1.5hp motor & reduction drive.
4. Electrical & Ink pump enclosures: Hoffman Rating: Nema 12 or better.
5. Ink System: Pneumatic pump type system  
Air Requirements: 5 CFM @ 60 PSI

### B. Electrical

1. Power Requirements: 110VAC 50/60 Hz, 5 amps \*Step-Down transformer available
2. I/O System:  
8 Inputs per card (high speed digital conversion) 8 outputs per card (2-3 cards standard)  
Standard Outputs: 110 VAC Triac with optional DC Logic: Sink/Source
3. Memory: Battery backed RAM, 1 GB DDR RAM + 512mb Flash
4. Calibration: Fully Automatic
5. Serial Ports: 2 RS-232
6. Ethernet Ports: 1 available

### C. Operational

1. Moisture Detection Range: 2-35%
  2. Scanning Area: 100 % of veneer surface
  3. Line Speed: 50-1000 FPM (300 m/min)
- ### D. Environmental
1. Operating Temperature: 0 to 55°C
  2. Humidity: 0 to 90% max. RH (non-condensing)

To find out more, visit our website at [www.ellbay.com](http://www.ellbay.com) or call us at 1-206-762-6560

